

# clever



## 1 Quaker Lane, Flat 6

, Plymouth, PL3 4SQ

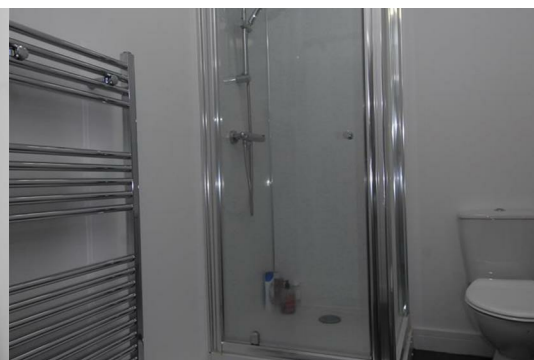
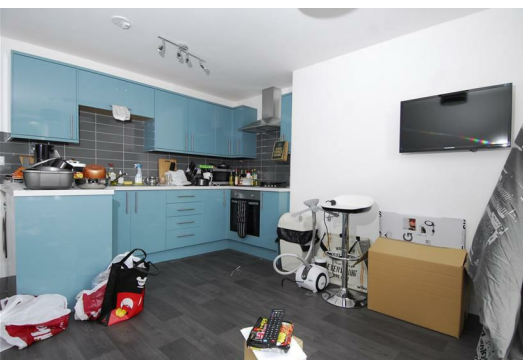
**£199**



\*\* Student property \*\*

Gorgeous and modern, 1-bedroom apartment, in fantastic location, just off Mutley Plain.

The road outside is all free parking and the property is less than 10 minutes to Plymouth University and the train station. Alternatively, it is close to bus routes for Marjon and Derriford.



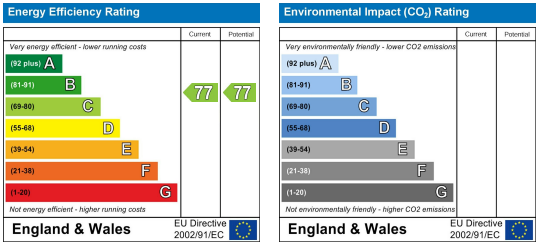
Area Map



Floor Plans



Energy Efficiency Graph



These particulars, whilst believed to be accurate are set out as a general outline only for guidance and do not constitute any part of an offer or contract. Intending purchasers should not rely on them as statements of representation of fact, but must satisfy themselves by inspection or otherwise as to their accuracy. No person in this firms employment has the authority to make or give any representation or warranty in respect of the property.